

MEDIUM DUTY COMMERCIAL LIFTS CAPABLE OF SAFELY SERVICING VEHICLES SMALL AND LARGE

SPACELOGIC

PLATFORM SCISSOR LIFT
12,000 LB. / 5.4T CAPACITY
DOUBLE WALL RUNWAYS WITH "Z" RAILS



The Liftsuperstore and all its registered trade marks are part of the TLS Lift Group. Please call us for product information on commercial and heavy duty lift products. www.tslifts.com

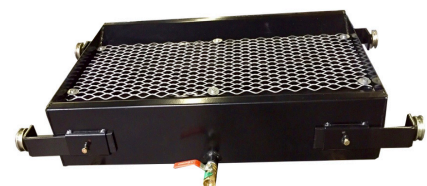
OPTIONAL ACCESSORIES



▲ Jacking beam TLSRJ6



▲ In Floor flush mounted installation



▲ Rolling waste oil drain

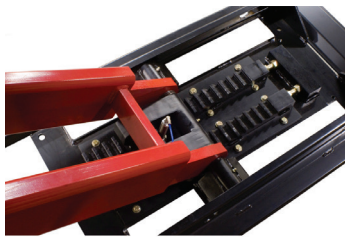
SPECIFICATIONS	* Dimension based on surface mounted lifts. For flush mount please contact factory.
Capacity	12,000 lbs / 5.5T
Overall Length	242-3/4" / 6166mm
Deck Length	185" / 4700mm
Overall Width	91-1/2" / 2324mm
Width Between Runways	41" / 1041mm
Deck Width	23" / 584 mm
Lowered Height	10-3/4" / 73mm
Raised Height	74" / 1880 mm
Structural Finish	Double bake powder coat
Synchronization	PCB board with under deck mounted transducers
Warranty	Two years on all parts
Maximum Service Wheelbase	180" / 4572mm
Lift Time	58 Seconds
Power Requirements	230 Volts AC - 60 Hz - 1 PH - 25amp
Shipping Weight	5,890 lb. / 2.7T
Part Number	LSSS12FD

FEATURES

- Built to higher quality standard; 100% North American made - premium US Leeson 3HP / 2.2kw motor and HPI pump.
- Superior structural strength provides longer life - Non flex double wall runways with built in "Z" rail and heavy duty 3" x 6.5" 3/8" / 76mm x 165mm 9.5mm wall tubular legs
- Greater flexibility with more models to chose from - Available in surface or flush mounted, and a choice of floor mounted "console" control or space saving wall/floor mounted power unit with pendant control.
- Premium options and accessories can expand the capabilities and service life - Built in tire inflation hoses, removable work steps, LED runway lighting and premium heavy duty extended life 5 year warranty HD jacking beams
- Lower maintenance costs - steel components are wheel-a-brator shot blasted and acid washed before a "double bake" powder coat finish is applied. Zirk style grease fittings at all hinge points. Runway under rear slip plates is open to prevent water and dirt collecting.
- Precision levelling feature - PCB Control with linear transducers control level to within 5/32" / 4mm. The full adjustable floor mounted rack and pinion style "gear blocks" allow for precise levelling.
- Designed for greater technician productivity - there are no obstructions between the runways or base frame. The lift rises 74" / 1880mm in 45 seconds with 20 locking positions. Built in runway compressed air outlets front and rear.

ADDITIONAL FEATURES

POWER UNIT OPTIONS



Scissor Rack and Pinion style Gear Rack



Enclosed Console Control

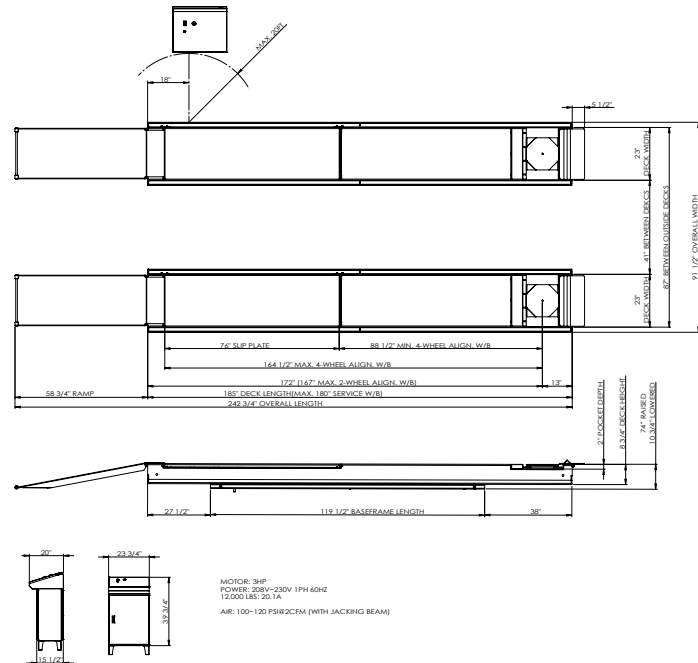


Premium North American made low pressure cylinders



Wall/Floor Mount with Pendant

EQUIPMENT FOOTPRINT



CONTACT US NOW

WWW.LIFTSUPERSTORE.COM OR CALL (866) 799-5438