



Lift it. Store it. Repair it

CALL 866-799-LIFT



LIBERATOR
LSS2P16
LSS2P18

YOUR CAR REPAIR EQUIPMENT HEADQUARTERS.

AUTOMOTIVE AND LIGHT TRUCK GENERAL SERVICE
LIFTSUPERSTORE LIFTS INCLUDE NORTH AMERICAN KEY COMPONENTS

LIBERATOR

16,000 OR 18,000 LB. / 7.3 OR 8.2T CAPACITY HD 2 POST COMMERCIAL LIFT

SYMMETRIC LIFTING



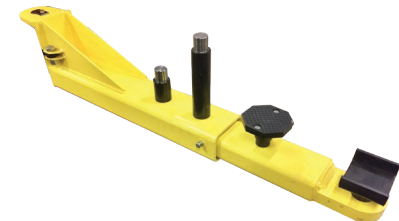
LSS2P16
LSS2P18

The Liftsuperstore and all its registered trade marks are part of the TLS Lift Group. Please call us for product information on commercial and heavy duty lift products. www.tslifts.com

OPTIONAL ACCESSORIES



▲ North American Power Unit / Air Mechanical Locking System with Regulator



▲ 15,000 lb. / 7.3T Lift with 4" / 102mm Pad Height for Cars & Light Trucks - Drop in Stacking Adapters



▲ 18,000 lb. / 8.2T Lift with 5" / 127mm Pad Height for Light and Medium Trucks - Screw in Style Saddle Adapters

CONTACT US NOW WWW.LIFTSUPERSTORE.COM OR CALL 866-799-LIFT (5438)

2 POST - LIBERATOR
16,000 OR 18,000 LB. / 7.3 OR
8.2T SYMMETRIC MODELS



16K / 7.3T LSS2P16/
18K / 8.2T LSS2P18

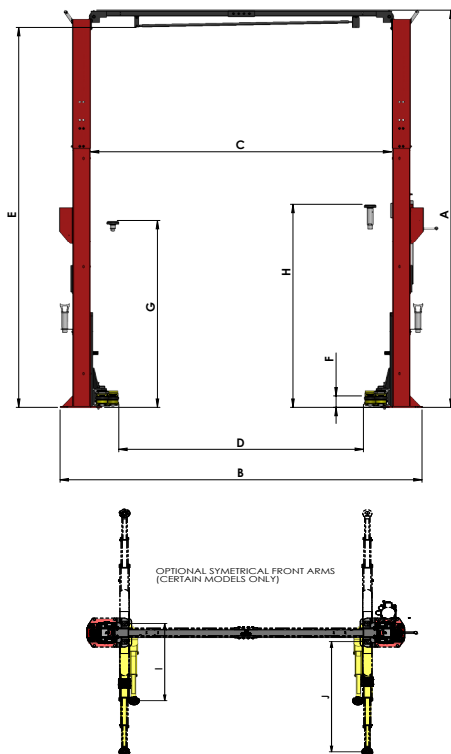
SPECIFICATIONS & FEATURES

SPECIFICATIONS		LIBERATOR 2 POST	
	Capacity	16,000 lb. (7.3T)	18,000 lb. (8.2T)
A	Overall Height	199 1/2" (5067mm)	
B	Overall Width	152" (3861mm)	
C	Width Between Columns	120 1/2" (3061mm)	
D	Drive Thru Width	106 3/4" (2711mm)	
E	Under Bar Clearance	192 1/2" (4890mm)	
F	Height to Lowered Lift Pad	4" / 102 mm	5" (127mm)
G	Raised Height with Standard Pad	76" / 1930 mm	
H	Raise Height with Adapters	87 1/2" (2222mm)	85 1/2" (21272mm)
I	Front Arm Reach	34" to 62" (864mm to 1575mm)	
J	Rear Arm Reach	34" to 62" (864mm to 1575mm)	
	Lifting Time	75 seconds	
	Standard Power Requirements	230 Volts - 60 Hz - 1PH - 20 Amp	
	ALI Certified with Gold Label	Yes	Yes
	Shipping Weight	3,350 lb. (1520 kg.)	3,850 lb. (1750 kg.)

Disclaimer: TLS Inc. is constantly updating their products to maintain the highest possible standards of performance and safety. The specifications included in this brochure are only accurate at the time of printing and are subject to change without notice.

FEATURES	
<ul style="list-style-type: none"> Built to higher quality standard; 100% North American made - premium US made Monarch (Bucher) 4HP/ 3 kw power unit, 3/8" / 9.5mm non fatigue equalizing cables, 5" / 127mm steel pulleys and 2.5" / 63.5mm ID Hydraulic Cylinders. Greater flexibility - available in a 16,000 lb./ 7.3T capacity with lighter arms and a lowered pad height of 3-1/2" / 89mm or the heavy duty 18,000 lb./ 8.2T version with heavy non sag arms and a 5-1/2" / 140mm pad height. More working room for larger trucks - 120-1/2" / 3061mm between the inside of the columns and 192-1/2" / 4890mm under the shut off bar. Stronger and more stable structure - single piece columns 15" x 9" / 381mm x 230mm up to 199-1/4" / 5061mm tall can be custom ordered to fit your building. Large irregular shaped base plate 17" x 31" / 432 x 	<ul style="list-style-type: none"> 787mm. Corrosion resistant protection - steel components are wheelabrator shot blasted and acid washed before a "double bake" powder coat finish is applied. Lifts higher to provide more under car work area - the 72" / 1829mm long cylinder stroke provides 76" / 1930mm lift without adapters with a maximum attainable lift height of 85-1/2" / 2172mm. Ease of operation - Positive air release mechanical locking system with stainless steel air cylinders. Includes built in air regulator / filter water trap. Power unit can be installed on either side. Reduced vehicle setup time - "Drop in" style steel saddle style lift can be extended in height with 1-1/2" / 38mm, 4" / 102mm or 10" / 254mm steel adapters. Quieter operation less than <75 decibels - rubber mounting

EQUIPMENT FOOTPRINT



ADDITIONAL FEATURES



3/8" / 76mm non fatigue equalization cables and 5" / 127mm steel pulleys

Self Activating Arm Restraints



The Liftsuperstore
 Retail locations throughout Canada
Headoffice & Warehouse
 2300 Speers Rd Oakville Ontario

Call: 866-799-5438

