



CALL 866-799-LIFT

WWW.LIFTSUPERSTORE.COM

LSS2P16/18/20

AUTOMOTIVE AND LIGHT TRUCK GENERAL SERVICE
LIFTSUPERSTORE LIFTS INCLUDE NORTH AMERICAN KEY COMPONENTS



LIBERATOR

16, 18 OR 20,000 LB. / 7.3T,
8.2T OR 9.1T CAPACITY HD
2 POST COMMERCIAL LIFT

HEAVY DUTY SYMMETRIC LIFTING



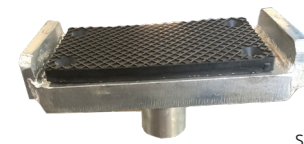
RUBBER CAR/SUV
ADAPTER



LSS2P16
LSS2P18
LSS2P20



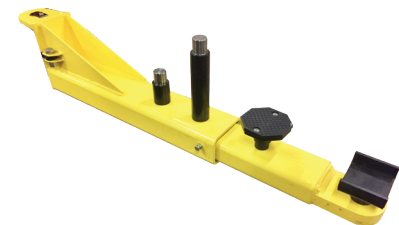
OPTIONAL ACCESSORIES



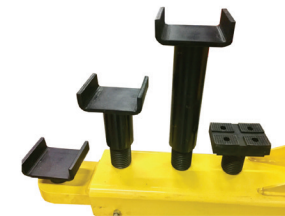
Set of 4
GM TRUCK 7" (177.8MM) PADS TLSGMTA



NORTH AMERICAN POWER UNIT / AIR
MECHANICAL LOCKING SYSTEM WITH
REGULATOR



16,000 LB. / 7.3T LIFT WITH 4" / 102MM
PAD HEIGHT FOR CARS & LIGHT TRUCKS
- DROP IN STACKING ADAPTERS



18, 20,000 LB. / 8.2T OR 9.1T LIFT WITH
5" / 127MM PAD HEIGHT FOR LIGHT AND
MEDIUM TRUCKS - SCREW IN STYLE
SADDLE ADAPTERS

OCTOBER 2023

CONTACT US NOW WWW.LIFTSUPERSTORE.COM OR CALL 866-799-LIFT

2 POST - LIBERATOR
16, 18 OR 20,000 LB. / 7.3T,
8.2T OR 9.1T SYMMETRIC
MODELS



16K / 7.3T LSS2P16
18K / 8.2T LSS2P18
20K / 9.1T LSS2P20

SPECIFICATIONS & FEATURES

SPECIFICATIONS		LIBERATOR 2 POST	
	CAPACITY	16,000 LB. OR 18,000 LB. (7.3T OR 8.2T)	18 OR 20,000 LB. (9.1T)
A	OVERALL HEIGHT	199 1/2" (5067MM)	
B	OVERALL WIDTH	152" (3861MM)	
C	WIDTH BETWEEN COLUMNS	120 1/2" (3061MM)	
D	DRIVE THRU WIDTH	106 3/4" (2711MM)	
E	UNDER BAR CLEARANCE	192 1/2" (4890MM)	
F	HEIGHT TO LOWERED LIFT PAD	4" / 102 MM	5" (127MM)
G	RAISED HEIGHT WITH STANDARD PAD	76" / 1930 MM	
H	RAISE HEIGHT WITH ADAPTERS	87 1/2" (2222MM)	85 1/2" (21272MM)
I	FRONT ARM REACH	34" TO 62" (864MM TO 1575MM)	
J	REAR ARM REACH	34" TO 62" (864MM TO 1575MM)	
	LIFTING TIME	75 SECONDS	
	STANDARD POWER REQUIREMENTS	230 VOLTS - 60 HZ - 1PH - 20 AMP	
	ALI CERTIFIED WITH GOLD LABEL	YES	YES
	SHIPPING WEIGHT	3,350 LB. (1520 KG.)	3,850 LB. (1750 KG.)
	MODEL NUMBER	LSS2P16/LSS2P18	LSS2P20

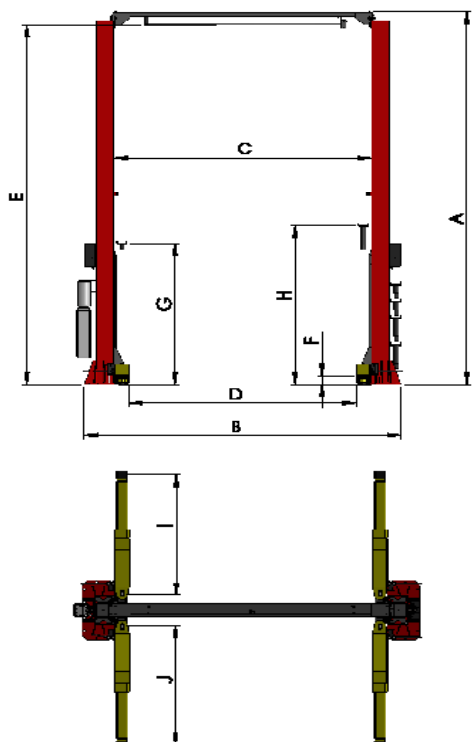
FEATURES

- BUILT TO HIGHER QUALITY STANDARD; 100% NORTH AMERICAN MADE - PREMIUM US MADE MONARCH (BUCHER) 4HP/ 3 KW POWER UNIT, 3/8" / 9.5MM NON FATIGUE EQUALIZING CABLES, 5" / 127MM STEEL PULLEYS AND 2.5" / 63.5MM ID HYDRAULIC CYLINDERS.
- GREATER FLEXIBILITY - AVAILABLE IN A 16,000 LB./ 7.3T CAPACITY WITH LIGHTER ARMS AND A LOWERED PAD HEIGHT OF 3-1/2" / 89MM OR THE HEAVY DUTY 18,000 LB./ 8.2T VERSION WITH HEAVY NON SAG ARMS AND A 5-1/2" / 140MM PAD HEIGHT.
- MORE WORKING ROOM FOR LARGER TRUCKS - 120-1/2" / 3061MM BETWEEN THE INSIDE OF THE COLUMNS AND 192-1/2" / 4890MM UNDER THE SHUT OFF BAR.
- STRONGER AND MORE STABLE STRUCTURE - SINGLE PIECE COLUMNS 15" X 9" / 381MM X 230MM UP TO 199-1/4" / 5061MM TALL CAN BE CUSTOM ORDERED TO FIT YOUR BUILDING. LARGE

- IRREGULAR SHAPED BASE PLATE 17" X 31" / 432 X 787MM.
- CORROSION RESISTANT PROTECTION - STEEL COMPONENTS ARE WHEEL-A-BRATOR SHOT BLASTED AND ACID WASHED BEFORE A "DOUBLE BAKE" POWDER COAT FINISH IS APPLIED.
- LIFTS HIGHER TO PROVIDE MORE UNDER CAR WORK AREA - THE 72" / 1829MM LONG CYLINDER STROKE PROVIDES 76" / 1930MM LIFT WITHOUT ADAPTERS WITH A MAXIMUM ATTAINABLE LIFT HEIGHT OF 85-1/2" / 2172MM.
- EASE OF OPERATION - POSITIVE AIR RELEASE MECHANICAL LOCKING SYSTEM WITH STAINLESS STEEL AIR CYLINDERS. INCLUDES BUILT IN AIR REGULATOR / FILTER WATER TRAP. POWER UNIT CAN BE INSTALLED ON EITHER SIDE.
- REDUCED VEHICLE SETUP TIME - "DROP IN" STYLE STEEL SADDLE STYLE LIFT CAN BE EXTENDED IN HEIGHT WITH 1-1/2" / 38MM , 4" /

Disclaimer: TLS Inc. is constantly updating their products to maintain the highest possible standards of performance and safety. The specifications included in this brochure are only accurate at the time of printing and are subject to change without notice.

EQUIPMENT FOOTPRINT



ADDITIONAL FEATURES



3/8" / 76MM NON FATIGUE EQUALIZATION CABLES AND 5" / 127MM STEEL

SELF ACTIVATING ARM RESTRAINTS



CONTACT US NOW

866-799-LIFT



THE LIFTSUPERSTORE
HEADOFFICE & MANUFACTURING
2300 SPEERS RD OAKVILLE ONTARIO



AUTHORIZED TLS DISTRIBUTORS LOCATED: ALABAMA, ARIZONA, CALIFORNIA, FLORIDA, TEXAS, INDIANA, KANSAS, NEW ENGLAND, NEW HAMPSHIRE, WISCONSIN, MISSOURI, & VIRGINIA