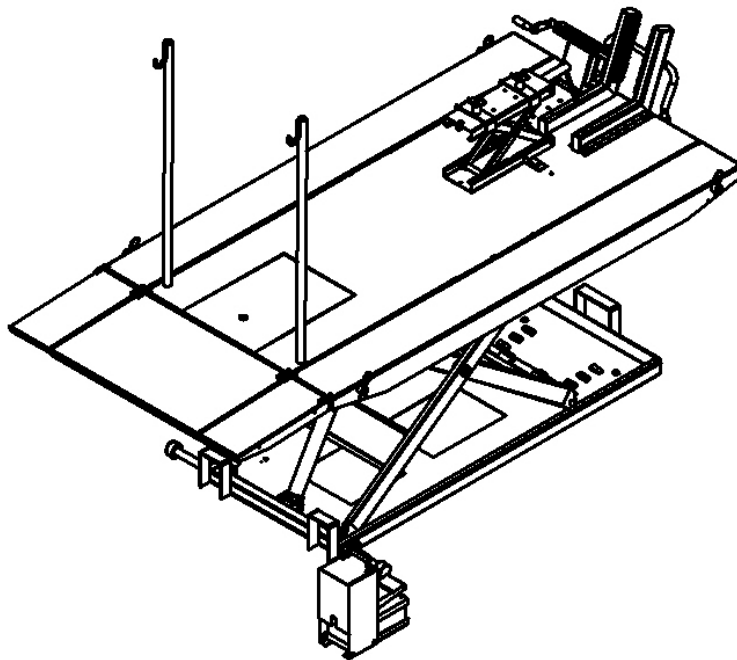




LSSMC2000



2,000 lb. (909 kg)

Motorcycle/ATV Lift

Installation / Operation & Service Parts Manual

**READ the Manual Thoroughly Before Installing,
Operating, Servicing, or Maintaining the Lift**

SAVE this MANUAL and ALL INSTRUCTIONS

Lift Purchase Buyers Agreement

Warranty

Each product comes with a two (2) year parts warranty with five (5) years warranty on the structure. The parts warranty is limited to defects in workmanship and material. The warranty does not cover misuse, abuse, overloading, lack of maintenance, and inappropriate use or "normal wear and tear". Warranty parts must be returned to manufacturer for inspection to qualify for warranty. Shipping costs are the owner's responsibility.

Freight Damage

Each lifting product is carefully inspected before being loaded by our shipping department. Any damage to the product must be noted on the shipping companies "bill of lading" and signed by the driver. It is the owner's responsibility to advise manufacturer within **48 business hours**, of any shipping damage.

Installation

At the purchase request, delivery and installation can be arranged by a professional contractor. It is the owner's responsibility to approve the completion of the work done and that the product is working properly. If there is a dispute with the work being done the owner must advise our office within **24 business hours**.

Lift Maintenance

Every lifting product will require ongoing adjustment and maintenance. It is normal that the lifting cables will require adjustment to ensure that the lift operates level. Periodic adjustments are the owner's responsibility. If the owner requires the assistance of a lift technician, a service charge will be paid directly for a service call. The lift is manufactured with a baked on power coat finish. It is recommended to maintain this finish that scratches are periodically touched up with automotive style paint. All non-painted services should be kept clean and lubricated to prevent rust or corrosion.

Service Calls

Onsite service of your lifting product can be arranged by a qualified lift service technician. The owner will be responsible for paying the contractor directly for this service at the time the work is completed. It is the owner's responsibility to return any parts to manufacturer for warranty consideration.

IMPORTANT: It is the shop owner's responsibility to provide a satisfactory installation area for the lift. Lifts should only be installed indoors on level concrete floors with a minimum of 4 inches (102mm) and 3000 psi (20.7MPa) concrete that has been aged a minimum of 30 days. Please consult a qualified individual if any doubt exists concerning proper installation and subsequent safe operation of the lift. Do not install the lift on asphalt or outdoors.

Prior to installation, it is the shop owner's responsibility to provide constant electrical power in the correct voltage, phase, etc., and all wiring for electrical hook-up of the lift. The shop owner must insure that the electrical installation conforms to local building and safety codes. Where required, the shop owner will provide an electrical isolation switch located in close proximity to the lift. This switch will have an emergency stop capability and isolate electrical power from the lift for servicing requirements.

It is the shop owner's responsibility to train all operators in lift operation and safety.

IMPORTANT SAFETY INSTRUCTIONS

When using your garage equipment, basic safety precautions should always be followed, including the following:

1. Read all instructions
2. Do not operate equipment with a damaged cord or if equipment has been dropped or damaged – until it has been examined by a qualified service person
3. To reduce risk of fire, do not operate equipment in the vicinity of open containers of flammable liquids (gasoline)
4. Adequate ventilation should be provided when working on operating internal combustion engines
5. Keep hair, loose clothing, fingers, and all parts of body away from moving parts
6. To reduce the risk of electric shock, do not use on wet surfaces or expose to rain
7. Use only as directed in this manual. Use only manufacturer's recommended attachments
8. ALWAYS WEAR SAFETY GLASSES. Everyday eyeglasses only have impact resistant lenses, they are not safety glasses

Basic common sense safety precautions should always be followed when installing, operating and maintaining the lift as a risk of fire, electric shock, injury or death may be present.

1. Only trained and authorized personnel should position a vehicle and operate the lift.
2. Inspect the lift daily. Do not operate if potential problems have been identified or lift malfunctions. Do not operate if lift has damaged or broken components. Never walk or work under the lift unless all safety locks are completely engaged.
3. Never overload the lift. The hydraulic system on this lift is not designed to be a load holding device. Mechanical safety locks must be engaged before proceeding under the lift for vehicle servicing or lift maintenance. Never override operating controls. This is unsafe and will void the warranty.
4. Before driving a vehicle onto the lift, insure that the lift and lift area is clear of all debris and that all oil and grease has been cleaned from runway surfaces.
5. Always chock wheels and set parking brake before lifting vehicle.
6. Always keep the lift area free of obstructions and debris. Grease and oil spills should be cleaned up immediately.
7. Never raise a vehicle on the lift with passengers. Before lowering, check the lift and lift area and remove all obstructions. Before removing vehicle from the lift or lift area, confirm an unobstructed exit.
8. DO NOT PERFORM ANY MAINTENANCE OR INSTALLATION OF ANY COMPONENTS WITHOUT FIRST ENSURING THAT ELECTRICAL POWER HAS BEEN DISCONNECTED AT THE SOURCE OR PANEL AND CANNOT BE RE-ENERGIZED UNTIL ALL MAINTENANCE AND/OR INSTALLATION PROCEDURES ARE COMPLETED (ANSI 244.1).

SAVE THESE INSTRUCTIONS

SPECIFICATIONS:

Model	LSSMC2000
Capacity	2000lbs (909Kg)
Operating Pressure	0.8-1.0Mpa (116-145psi)
Lowered Height	6-11/16" (170mm)
Raised Height	38-1/2" (980mm)
Platform (L x W) (with extension)	88-9/16" * 31-1/2" (2250mm * 800mm) 88-9/16" * 50" (2250mm * 1270mm)
Shipping weight (with extension)	462lbs (210Kg) 616lbs (280Kg)

FEATURES:

- Made of Heavy-Duty Diamond Plate
- Professional Air Hydraulic Pump with Protective Case
- Extra-High 980mm (38-1/2") for Easy Service Operation
- Extra-Wide Platform 800mm (31-1/2"). 1270mm (50") with Side Extensions
- Single Hydraulic Lifting Cylinder
- Cut-Out for easy access to rear wheel

STANDARD ACCESSORIES:

- (1) 9-1/4" (235mm) side extensions.
- (2) Approach ramps for side extensions
- (3) Four connecting rods to support the side extension.
- (4) Set of pins to secure the rods
- (5) Rear poles for fixing the motorcycle on platform
- (6) Front Wheel Vise

ASSEMBLY:

- (1) Open the carton. Remove lift.
- (2) Connect the hose from the cylinder to the air-hydraulic pump.
- (3) Connect the compressed air (Max 100 psi) supply to the air-hydraulic pump.
- (4) Press the pedal of the air-hydraulic pump to raise up the lift.
- (5) Put on the front wheel vise and then tighten all the bolts and nuts. (Optional)
- (6) Put on the side extensions with rods and securing pins. Remember to insert the balance bar. (Optional)
- (7) Lower the lift by raising the safety bar and releasing the pump pedal. Then put on all the ramps.
- (8) Without any load, lift and lower the lift several times to remove air from cylinder.

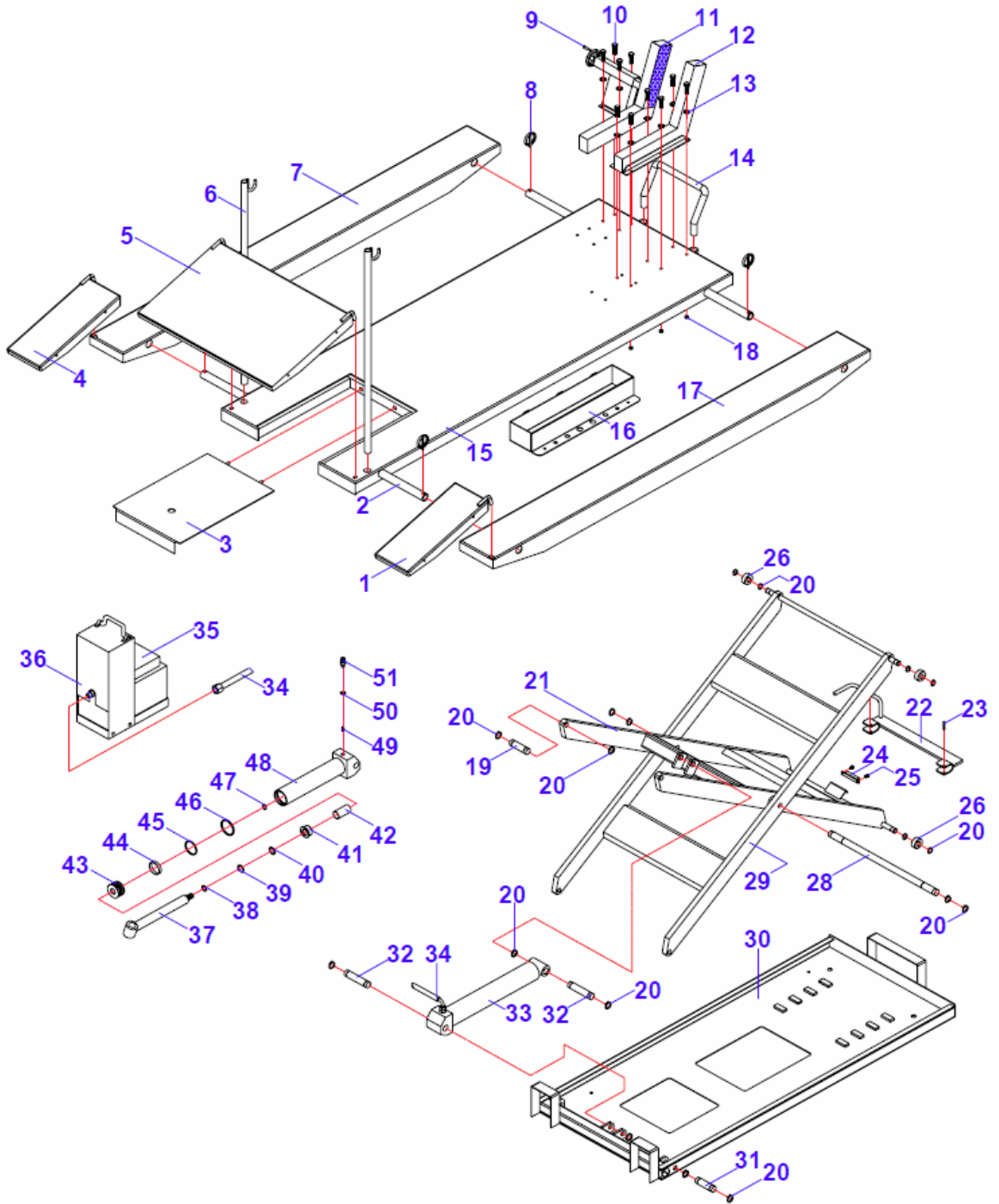
OPERATION:

1. Loads must be centered on platform at all times.
2. Loads must be firmly positioned and secured on platform at all times.
3. All moving parts have been lubricated at the factory and should be re-lubricated every (6) months.
4. Pivot shaft set screws should be checked frequently to be sure they are tight. These are located at the top end of the inside frame assembly.

WARNING:

1. Keep safety bar in position at all times – except when lowering.
2. Keep hands and tools from under carriage.
3. Do not ride vehicle onto lift.
4. Lift must be in the lowered position when moving.
5. Foot operated AIR-HYDRAULIC pump should be at least 3 feet away from lift during raising and lowering.
6. Lift is recommended for indoor use only.

PARTS DRAWING



ITEM	DESCRIPTION	QTY
1	Small ramp(Right)	1
2	Connecting shaft	4
3	Small platform assy	1
4	Small ramp(Left)	1
5	Ramp	1
6	Support shaft assy	2
7	Side extension(Left)	1
8	Position pin	4
9	Thread shaft assy	1
10	Hex bolt	14
11	Fixed plate assy(1)	1
12	Fixed plate assy(2)	1
13	Flat washer	14
14	Limit shaft	1
15	Platform assy	1
16	Tool box	1
17	Side extension(Right)	1
18	Hex nut	14
19	Spindle(1)	2
20	Elastic washer	18
21	Frame assy(1)	1
22	Safety assy	1
23	Elastic spindle	2
24	Magnet	1
25	Hex bolt	2
26	Idler wheel	4
28	Spindle(4)	1
29	Frame assy(2)	1
30	Underframe assy	1
31	Spindle(2)	2
32	Spindle(3)	2
33	Cylinder assy	1
34	Oil hose	1
35	Gear pump	1
36	Gear pump cover assy	1
37	Piston rod assy	1
38	O-ring	1
39	Elastic washer	1
40	Dust ring	1
41	Cylinder cover	1
42	Position ring	1
43	Piston	1
44	Guide ring	1
45	O-ring	1
46	U-ring	1
47	Elastic washer	1
48	Cylinder jointing assy	1
49	Throttling valve assy	1
50	Red copper washer	1
51	Union	1